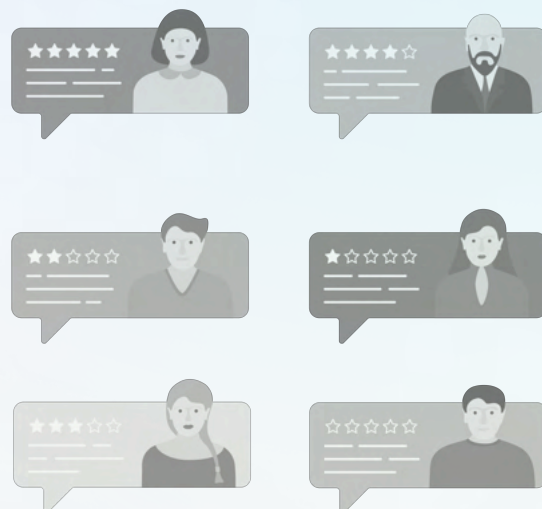


TRIBAL PERSPECTIVES & CASINO PATRON SURVEY RESULTS ON SMOKING.



This survey serves as a baseline to understand gaming patron, employee, and Tribal member preferences toward smoking indoors at casinos. A total of 2,136 responses were collected and analyzed.



TRIBAL VOICES

Tribal respondents prefer to play at 100% smokefree casinos and prefer to eat at restaurants inside of 100% smokefree casinos.



75%

of Tribal respondents said they do not smoke, and 51% of Tribal respondents said they use tobacco for ceremonial purposes.

86%



of casino-goers prefer a 100% smokefree casinos.

Most casino-goers play more than once a month, **have high daily budgets**, and also strongly prefer 100% smokefree casino facilities.

90% of patrons believe that safe indoor-breathing spaces are important. This concern is most pronounced among those 60 years or older.



Survey revealed that nearly all demographic groups prefer 100% smokefree casinos.

NUMBER ONE CHOICE

100% smokefree is the first factor that patrons will consider when visiting a casino, followed by cleanliness and free play.

ACCESS SURVEY

QR code will take you the ANR Foundation website where you can access the Tribal Perspective & Casino Patron Survey Results infographic and a survey template.



SCAN ME